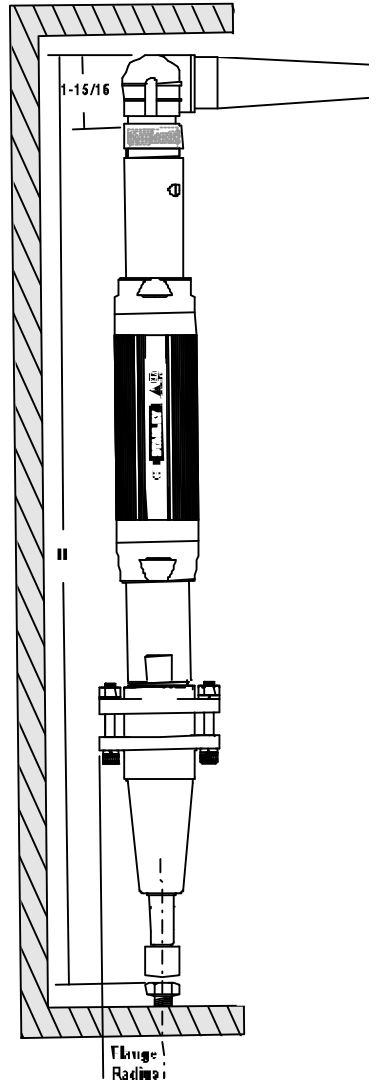
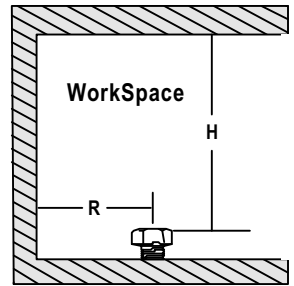


# Multiple Spindle Motor Selector

**Selection Instructions:**  
 Select the **Output Type**.  
 Select the **Tool Style**.  
 Select the **Torque Range** that fits the fastener.  
 Ensure **Tool Clearance** fits your work space.  
 Find the **Catalog Model** and **Page**.  
**NOTE:** the **Tool Removal** options are for maintenance on E23/33 Models.

Output Type	Tool Style	Tool Clearance (90° cable)						Tool Removal	Catalog Model	Page
		Torque Range		Flange Radius		3/4 & 1" Travel				
		Nm	ft lb	mm	inch	mm	inch			
MOTOR SIGHT	S	2.5 - 8	2 - 6	48	1.88	544	21.4	Front Only	E23MBF 1-8	27
		6 - 31	5 - 23	48	1.88	560	22		E23MBF 1	
		10 - 40	7 - 30	48	1.88	585	23		E33MBF 1	
	R	2.5 - 8	2 - 6	35	1.38	544	21.4		E23MBF 1-8F	27
		6 - 31	5 - 23	35	1.38	560	22		E23MBF 1-F	
		10 - 40	7 - 30	35	1.38	585	23		E33MBF 1-F	
	T	18 - 100	13 - 74	49	1.94	631	24.8	Front or Rear	E34MB1F1	28
		20 - 100	15 - 74	49	1.94	640	25.2		E44MB1F1	
		48 - 160	35 - 118	49	1.94	727	28.7		E45MB2F1	
	R	38 - 200	28 - 147	49	1.94	755	29.8	Rear Only	E55MB2F1	29
		48 - 250	35 - 184	56	2.19	744	29.2		E45MB3F1	
		38 - 250	28 - 184	56	2.19	772	30.3		E55MB3F1	
A	97 - 322	71 - 237	56	2.19	850	33.4	Front or Rear	E55MB3F1-322	29	
	141 - 623	104 - 459	72	2.84	746	29.3		E55MB4F1		
	307 - 1023	226 - 754	80	3.16	984	38.7		E55MB5F1-1023		
T	491 - 2005	362 - 1479	80	3.16	1016	40		E55MB5F1		
	Torque Range		Flange Radius		2" Travel		Tool Removal	Catalog Model	Page	
	Nm	ft lb	mm	inch	mm	inch				
MOTOR SIGHT	S	2.5 - 8	2 - 6	48	1.88	578	23	Front Only	E23MBF 2-8	27
		6 - 31	5 - 23	48	1.88	593	23.3		E23MBF 2	
		10 - 40	7 - 30	48	1.88	618	24.3		E33MBF 2	
	R	2.5 - 8	2 - 6	35	1.38	578	22.7		E23MBF 2-8F	27
		6 - 31	5 - 23	35	1.38	593	23.3		E23MBF 2-F	
		10 - 40	7 - 30	35	1.38	618	24.3		E33MBF 2-F	
	T	18 - 100	13 - 74	49	1.94	660	26.0	Front or Rear	E34MB1F2	28
		20 - 100	15 - 74	49	1.94	669	23.0		E44MB1F2	
		48 - 160	35 - 118	49	1.94	722	28.5		E45MB2F2	
	R	38 - 200	28 - 147	49	1.94	730	29.6	Rear Only	E55MB2F2	29
		48 - 250	35 - 184	56	2.19	767	30.2		E45MB3F2	
		38 - 250	28 - 184	56	2.19	795	31.3		E55MB3F2	
A	97 - 322	71 - 237	56	2.19	873	34.3	Front or Rear	E55MB3F2-322	29	
	141 - 623	104 - 459	72	2.84	997	39.2		E55MB4F2		
	307 - 1023	226 - 754	80	3.16	1033	40.7		E55MB5F2-1023		
T	491 - 2005	362 - 1479	80	3.16	1065	41.8		E55MB5F2		
	Torque Range		"R" Side to Center		3/4 & 1" Travel		Tool Removal	Catalog Model	Page	
	Nm	ft lb	mm	inch	mm	inch				
MOTOR SIGHT	S	2 - 7	105 - 5	13	0.5	544	21.4	Front Only	E23MDF 1-7	30
		6 - 27	4 - 20	13	0.5	560	22		E23MDF 1	
		9 - 36	6.5 - 27	13	0.5	585	23		E33MDF 1	
	R	2 - 7	1.5 - 5	13	0.5	544	21.4		E23MDF 1-7F	30
		6 - 27	4 - 20	13	0.5	560	22		E23MDF 1-F	
		9 - 36	6.5 - 27	13	0.5	585	23		E33MDF 1-F	
	T	16 - 90	12 - 66	17	0.67	631	24.8	Front Only	E34MD1F1	31
		17.5 - 90	13 - 66	17	0.67	640	25.2		E44MD1F1	
		43 - 144	32 - 106	19	0.75	711	28		E45MD2F1-144	
	R	34 - 180	25 - 133	19	0.75	739	29.1	Front Only	E55MD2F1	32
		43 - 225	32 - 166	25.4	1	744	29.2		E45MD3F1	
		34 - 225	25 - 225	25.4	1	772	30.3		E55MD3F1	
Torque Range		"R" Side to Center		2" Travel		Tool Removal	Catalog Model	Page		
Nm	ft lb	mm	inch	mm	inch					
MOTOR SIGHT	S	2 - 7	105 - 5	13	0.5	634	25	Front Only	E23MDF 2-7	30
		6 - 27	4 - 20	13	0.5	649	25.5		E23MDF 2	
		9 - 36	6.5 - 27	13	0.5	661	26		E33MDF 2	
	R	2 - 7	1.5 - 5	13	0.5	634	25		E23MDF 2-7F	30
		6 - 27	4 - 20	13	0.5	649	25.5		E23MDF 2-F	
		9 - 36	6.5 - 27	13	0.5	661	26		E33MDF 2-F	
	T	16 - 90	12 - 66	17	0.67	716	28.2	Front Only	E34MD1F2	31
		17.5 - 90	13 - 66	17	0.67	728	28.6		E44MD1F2	
		43 - 144	32 - 106	19	0.75	800	31.4		E45MD2F2-144	
	R	34 - 180	25 - 133	19	0.75	818	32.2	Front Only	E55MD2F2	32
		43 - 225	32 - 166	25.4	1	823	32.4		E45MD3F2	
		34 - 225	25 - 225	25.4	1	851	33.5		E55MD3F2	



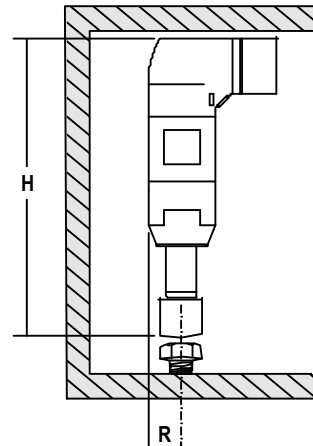
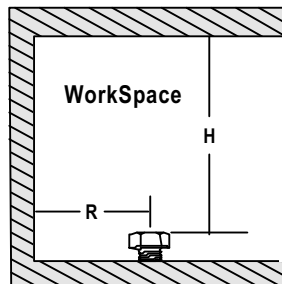


## Multiple Spindle Angle Motor Selector

### Selection Instructions:

1. Select the **Output Type**.
2. Select the **Torque Range** that fits the fastener.
3. Ensure **Tool Clearance** fits your **Work Space**.
4. Find the **Catalog Model** and **Page**.

**NOTE:** the **Tool Removal options** for maintenance on E23/33 Models.



Output Type Tool Style	Tool Clearance						Tool Removal	Catalog Model	Page
	Torque Range		Head Radius		3/4 & 1" Travel "H" Height/Std Socket				
	Nm	ft lb	mm	inch	mm	inch			
MOTOR ANGLE SELECTOR	14 - 46	10 - 34	17.5	0.69	135	5.3	Front Only	E33MA18F1-46	32
	18 - 60	11 - 34	19	0.75	197.5	7.8		E33MA19F1-60	
	21 - 70	12 - 34	19	0.75	197.5	7.8		E34MA19F1-70	
	21 - 70	13 - 34	19	0.75	197.5	7.8		E44MA19F1-70	
	35 - 116	14 - 34	22	0.88	165	6.5		E34MA22F1-116	
	35 - 115	15 - 34	22	0.88	165	6.5		E44MA22F1-115	
	45 - 201	16 - 34	26	1.02	194	7.7	E45MA26F1	33	
	33 - 221	17 - 34	26	1.02	204	8	E55MA26F1		
	101 - 401	18 - 34	32	1.25	245	9.6	E55MA32F1-401		
MOTOR ANGLE SELECTOR	Torque Range		Head Radius		2" Travel "H" Height/Std Socket		Tool Removal	Catalog Model	Page
	Nm	ft lb	mm	inch	mm	inch			
	14 - 46	10 - 34	17.5	0.69	176	6.9			
	18 - 60	13 - 44	19	0.75	245	9.6	E33MA19F2-60		
	21 - 70	15 - 51.5	19	0.75	246	9.6	E34MA19F2-70		
	21 - 70	15 - 51.5	19	0.75	247	9.6	E44MA19F2-70		
	35 - 116	27 - 85	22	0.88	201	7.9	E34MA22F2-116		
	35 - 115	26 - 85	22	0.88	201	7.9	E44MA22F2-115		
	45 - 201	33 - 148	26	1.02	283	11.2	E45MA26F2	33	
	33 - 221	22 - 163	26	1.02	293	11.5	E55MA26F2		
101 - 401	75 - 295	32	1.25	Contact Stanley		E55MA32F2-401			